



Gillian Harris

082 405 2655

[info@gigico.co.za](mailto:info@gigico.co.za)

📷 @gigico.za

*Stock and prices may change according to the suppliers.*

*Thank you !*

R85.00

Without embroidery

FWRD

FASHION



## CAMPER TRUCKER

PRINTING | EMBROIDERY

- Heavy Washed Cotton (100%) with Hard Mesh Back
- Enzyme Washed
- 6 Panel
- Structured
- Embroidered Eyelets
- Polyester Sweatband
- Pre-Curved Peak
- Self Fabric Velcro Strap

One Size Fits Most



R70.00

Without embroidery



### CLASSIC 6 PANEL

- Heavy Brushed Cotton (100%)
- 6 Panel
- Structured
- Embroidered Eyelets
- Pre-Curved Peak
- Polyester Sweatband
- Tuck-In with Slip Through Buckle

One Size Fits Most



R70 .00

Without embroidery



BASEBALL

FWRD

## AMERICANO

- Heavy Acrylic (100%)
- Fade Resistant
- 6 Panel
- Structured Cap
- Polyester Sweatband
- Embroidered Eyelets
- Pre-Curved Peak
- Self Covered Velcro Strap

One Size Fits Most



SCAN ME



R90 .00

Without embroidery

FWRD

FASHION



### MIAMI CAP

100% COTTON

- 100% Cotton Twill
- Garment Washed
- 6 Panel
- Unstructured
- Pre-Curved Peak
- Sheet Lining on 2 Front Panels
- Self Fabric Sweatband
- Tuck-In with Slip Through Buckle
- Embroidered Eyelets



One Size Fits Most



R95 .00

Without embroidery



FASHION

## FIDEL



- 100% Brushed Cotton
- Military Style
- Unstructured
- Polyester Sweatband
- Silver Metal Eyelets
- Pre-Curved Peak
- Self Fabric Velcro Strap



SCAN ME

One Size Fits Most



R85.00 [MOST POPULAR]

Without embroidery



### CAMPER

- Heavy Cotton (100%)
- Enzyme Washed
- 6 Panel
- Unstructured
- Embroidered Eyelets
- Pre-Curved Peak
- Self Fabric Sweatband
- Brass Clasp & Grommet Closure



One Size Fits Most



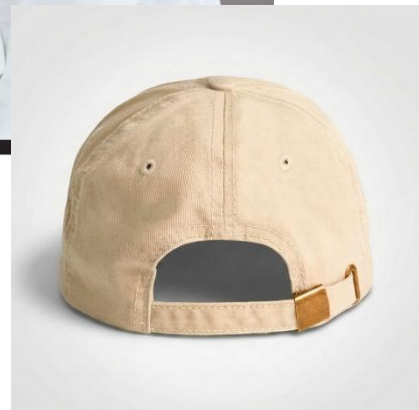
**R90.00**

**Without embroidery**



**URBAN**

- Heavy Cotton Twill (100%)
- Garment Washed
- 6 Panel
- Unstructured
- Embroidered Eyelets
- Polyester Sweatband
- Pre-Curved Peak
- Brass Clasp & Grommet Closure

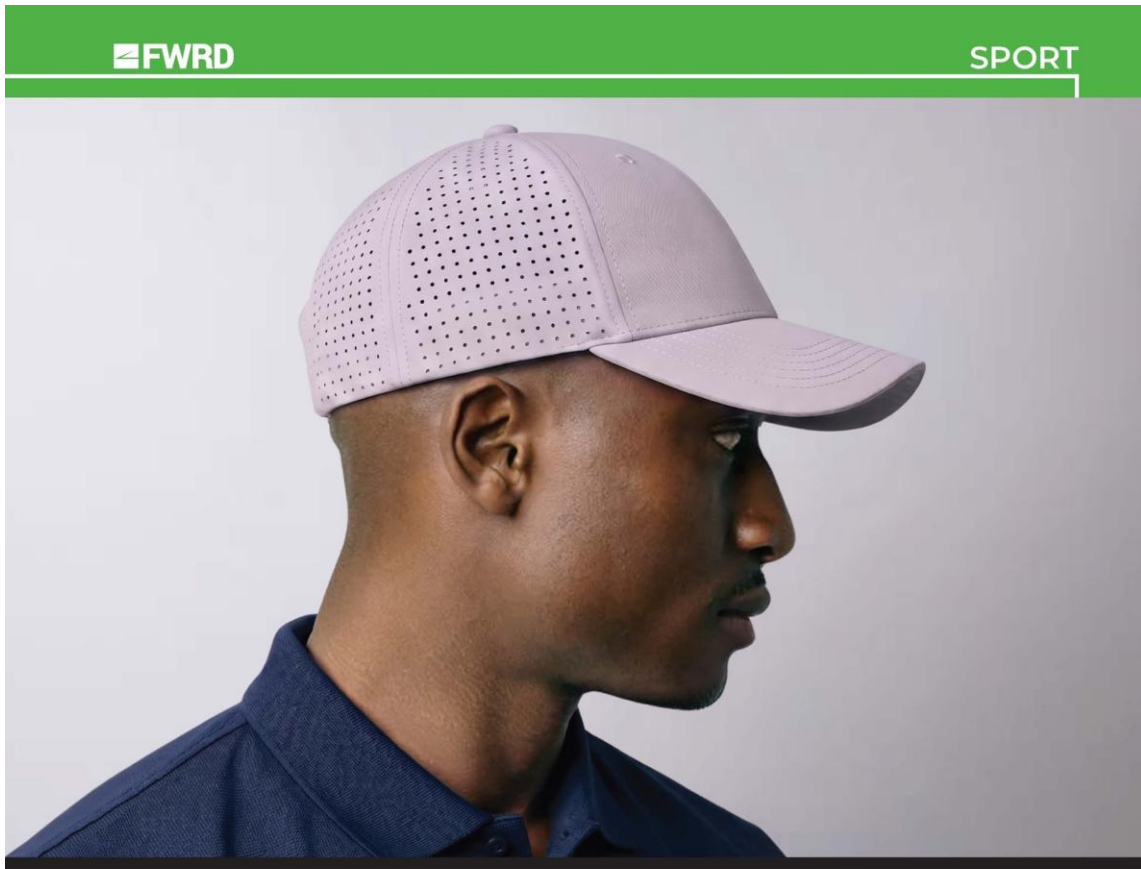


One Size Fits Most



**R95.00**

**Without embroidery**



**FWRD**

**SPORT**

### AIRTEK CAP

- 100% Polyester
- 6 Panel Structured
- Perforated Back Panels
- Birds Eye Sweatband
- Double Row Plastic Tab Closure
- Pre Curved Peak
- Embroidered Eyelets

One Size Fits Most

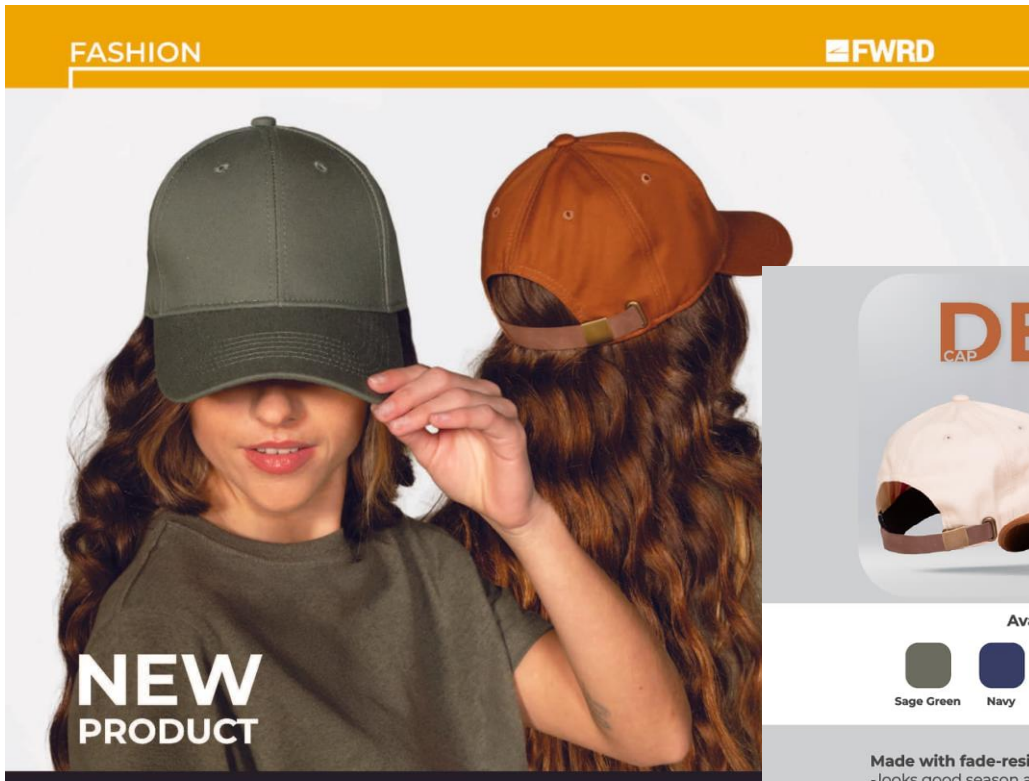


100% POLYESTER | PRINTING | EMBROIDERY



**R120.00**

**Without embroidery**



Available Colours



### DELTA

- Heavy Cotton Twill Fabric (100%)
- Fade-resistant Treatment
- 6 Panel
- Polyester Sweatband
- Embroidered Eyelets
- Structured Crown & Pre-curved Peak
- Genuine Leather back Strap

One Size Fits Most

**Made with fade-resistant cotton**  
- looks good season after season

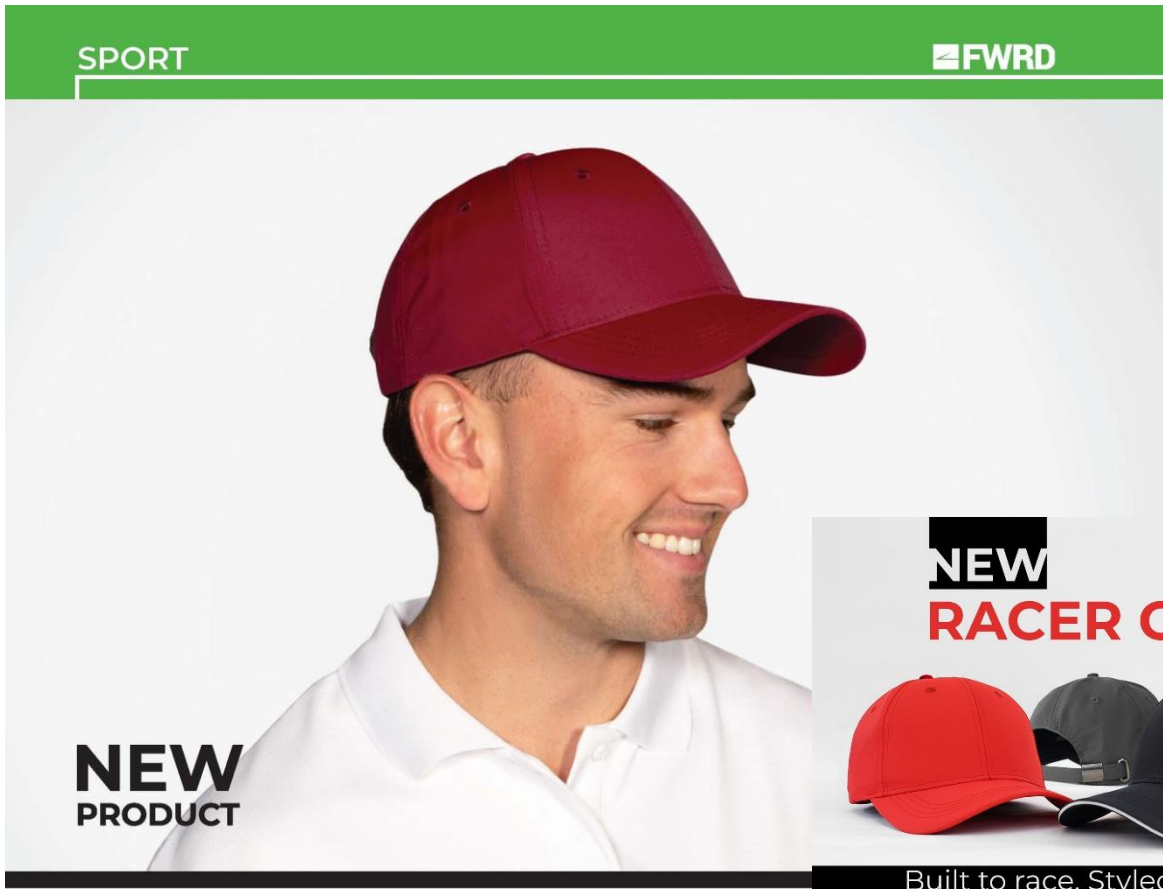
**Rugged enough for bush life**  
refined enough for guest wear

**Real leather strap**  
- real quality  
- not your average cap



**R95.00**

**Without embroidery**



## RACER

- 100% Polyester Ripstop
- Embroidered Eyelets
- 6 Panel
- Structured
- Pre-Curved Peak
- Polyester Sweatband
- Gun Metal Clasp & Grommet Closure
- Fade Resistant

One Size Fits Most



- 100% Polyester Ripstop
- 6 Panel
- Structured
- Polyester Sweatband

- Embroidered Eyelets
- Pre-Curved Peak
- Gun Metal Clasp & Grommet Closure



Racer Cap



Racer Sandwich Cap



R130.00 **[MOST POPULAR]**

Without embroidery



### OILSKIN

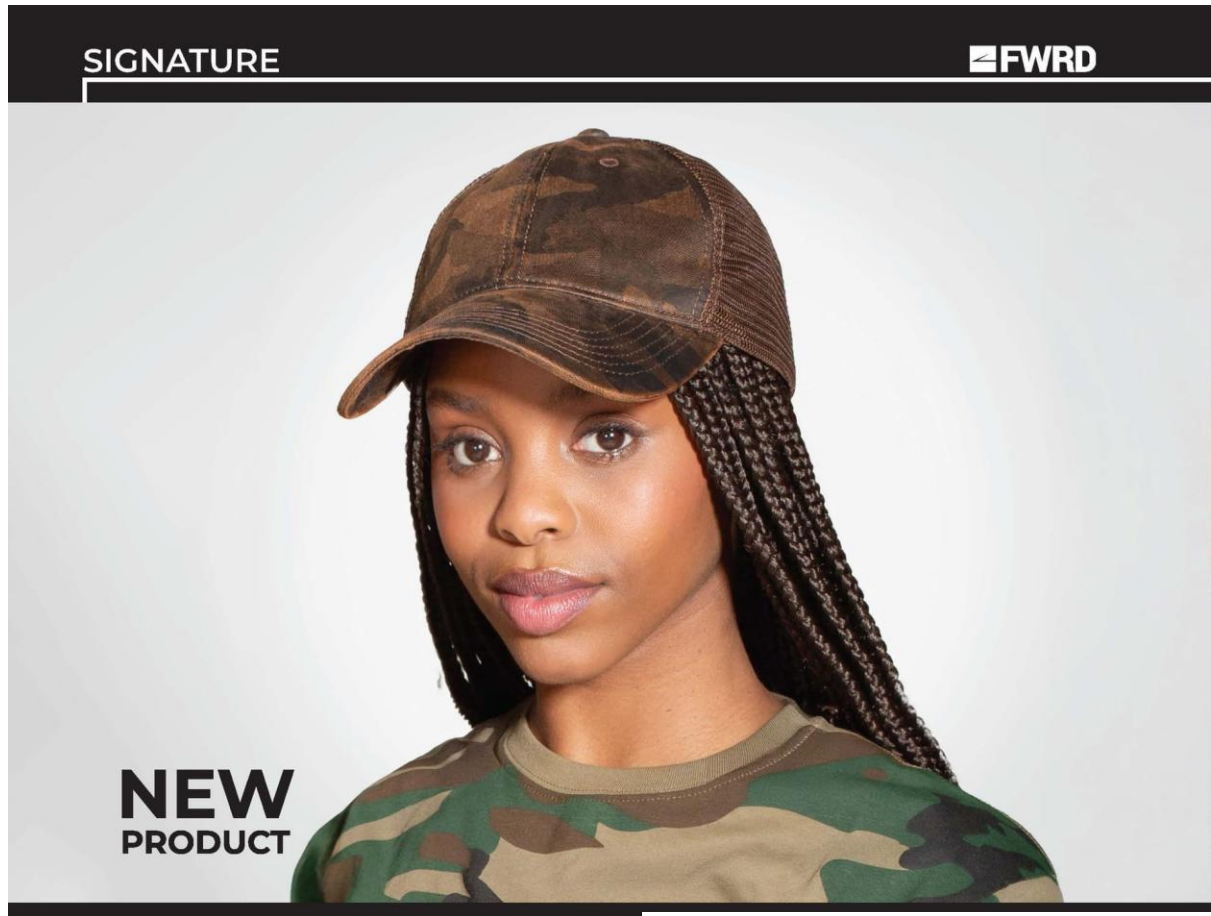
- Oil Base Ink Dye 100% Cotton
- 6 Panel
- Unstructured
- Embroidered Eyelets
- Pre-Curved Peak
- Cotton Twill Sweatband
- Brass Clasp & Grommet Closure

One Size Fits Most



**R130.00**

**Without embroidery**



## OILSKIN CAMO TRUCKER

- Camo-print Oilskin Front Panels
- Oil Base Ink Dye 100% Cotton
- 6-panel Trucker with a Pre-curved Peak
- Soft Mesh
- Cotton Twill Sweatband
- Adjustable Snapback Closure for Sizing Flexibility

One Size Fits Most



Camo

## NEW OILSKIN CAMO TRUCKER



**Crafted for the Wild, Worn with Purpose.**

### Product Features

- Camo-print oilskin front panels
- Classic 6-panel trucker
- Breathable soft mesh back for comfort fit.
- Pre-curved peak with top stitching
- Adjustable snapback closure for a comfortable fit

**R70.00 – CLASSIC TWO TONE // R60.00 – CLASSIC SANDWICH**

**Without embroidery**



**CLASSIC TWO TONE**

- Heavy Brushed Cotton (100%)
- 6 Panel
- Structured
- Embroidered Eyelets
- Polyester Sweatband
- Pre-Curved Peak
- Tuck-In with Slip Through Buckle



SCAN ME

One Size Fits Most



Khaki/Bottle



Khaki/Navy



**CLASSIC SANDWICH**

- Heavy Brushed Cotton (100%)
- 6 Panel
- Structured
- Metal Eyelets
- Pre-Curved Peak With Sandwich
- Polyester Sweatband
- Tuck-In with Slip Through Buckle



SCAN ME

One Size Fits Most

\*While stocks last

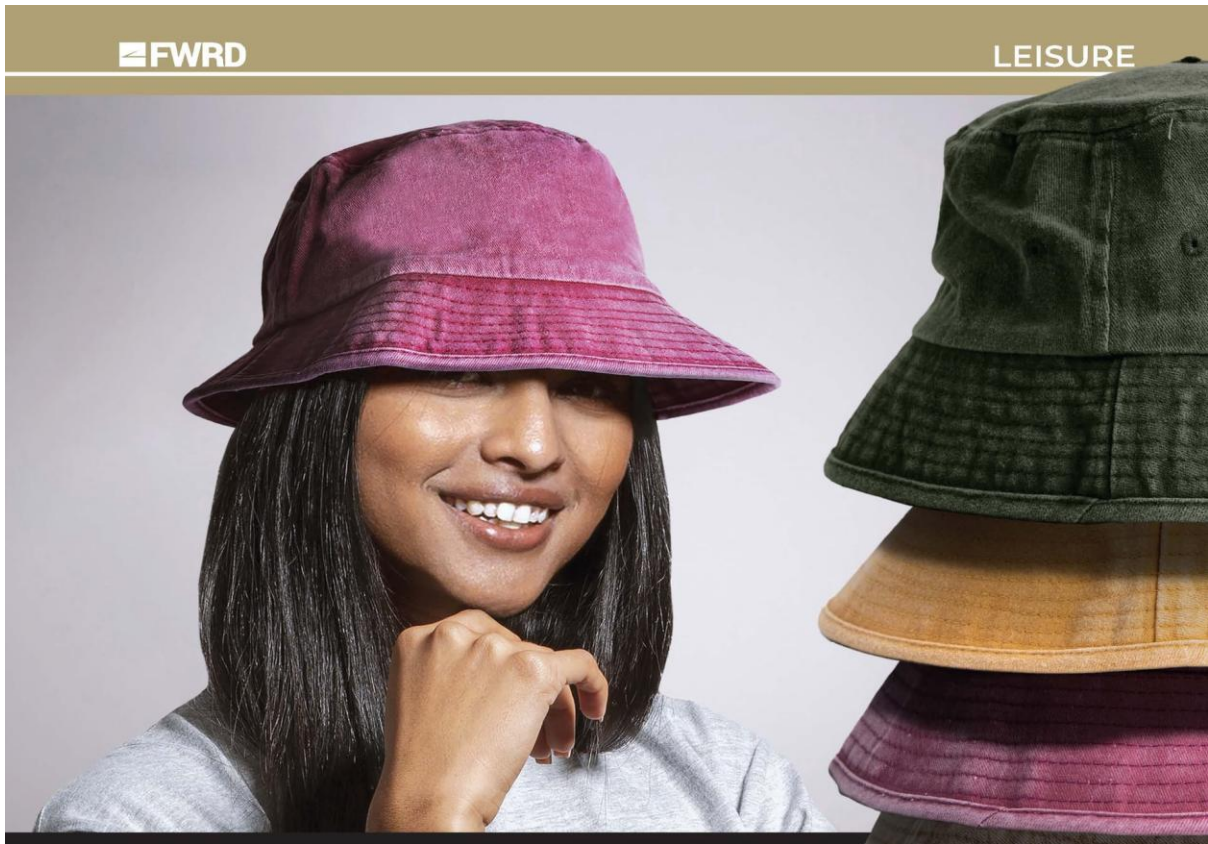


Black/White



**R100.00**

**Without embroidery**



### HARLEM BUCKET HAT

- 100% Cotton Twill
- Enzyme Washed
- High Crown
- Unstructured
- Self Fabric Sweatband
- Embroidered Eyelets
- Binding on Brim



SCAN ME

S/M 56CM | L/XL 59CM



**R155.00**

**Without embroidery**



FWRD

LEISURE

## BUSH HAT

- Cotton Twill (100%)
- Structured
- Binding on Brim
- Polyester Sweatband
- Brass Eyelets & Press Studs
- Clip Up Brim
- Open end Cord With Slide Toggle



S/M 57cm L/XL 60cm



**R295.00**

**Without embroidery**

LEISURE

FWRD



## WEATHERMAN



- 100% Polyester
- 6 Panel Crown
- Unstructured
- Binding on Brim
- Birdseye Sweatband
- Wind/Water Resistant
- Padded Mesh Crown Insets
- Elastic Head Fastener with Slide Toggle
- Cord With Slide Toggle
- Concealed Back Flap

One Size Fits Most



Stone



Olive



Camel



Dark Grey



Navy

# R175.00 – RANGER HAT // R175 – SAVANNAH HAT

**Without embroidery**



FWRD

LEISURE

## RANGER HAT

- Heavy Brushed Cotton (100%)
- Unstructured
- Polyester Sweatband
- Gun Metal Mesh Eyelets
- Cord With Slide Toggle
- Looped Band
- Hat Lined with Mesh



S/M 67CM L/XL 69CM



## SAVANNAH HAT

- 100% Heavy Cotton Twill
- Polyester Hard Mesh Crown
- Unstructured
- Polyester Sweatband
- Binding on Brim
- Back Flap for added Neck Protection
- Cord With Slide Toggle



S/M 67CM L/XL 69CM

\*While stocks last



**R155.00**

**Without embroidery**



SPORT

FWRD

## CRICKET HAT

- Heavy Brushed Cotton (100%)
- Unstructured
- Binding on Brim
- Polyester Sweatband
- Metal Eyelets
- Cord with Slide Toggle

S/M 57CM L/XL 60CM

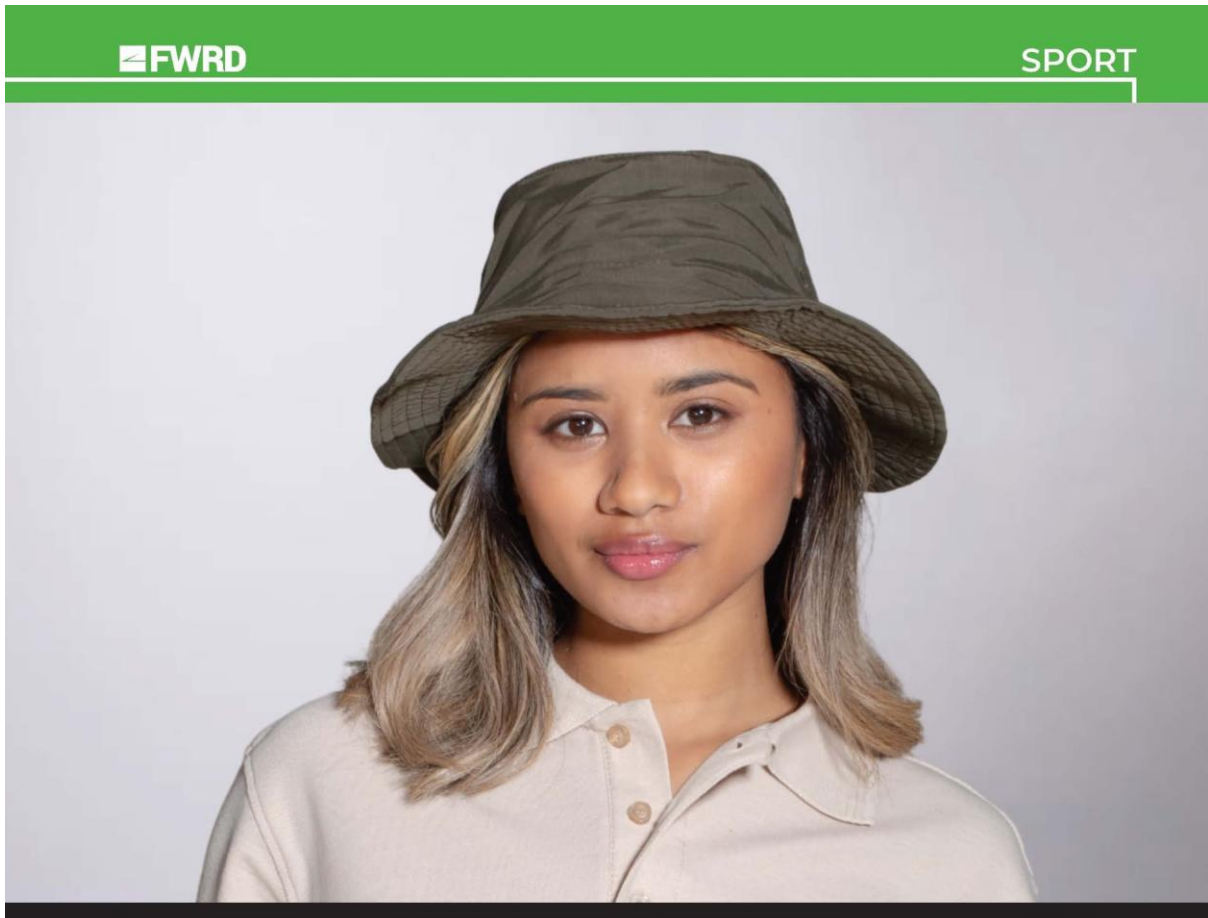


SCAN ME



**R150.00**

**Without embroidery**



**FWRD**

**SPORT**

## VENTURE HAT

- 100% Microfiber, Quick Drying
- Unstructured
- Binding on Brim
- Polyester Sweatband
- Embroidered Eyelets
- Elastic Slide Toggle at back
- Inside Name Label



S/M 57CM L/XL 60CM



**R120.00**

**Without embroidery**



SPORT

FWRD

## FISHERMAN

- Polycotton
- Fade Resistant
- 7 Panel
- Unstructured
- Polyester Sweatband
- Pre-Curved Peak
- Back Flap For Added Neck Protection
- Self Covered Velcro Strap

One Size Fits Most



SCAN ME



Stone



Olive



Khaki

**R105.00**

**Without embroidery**



## NATIONAL

- Heavy Brushed Cotton (100%)
- 6 Panel
- Structured
- Embroidered Eyelets
- Polyester Sweatband
- Pre-Curved Peak
- Woven Fabric Detail On Peak
- Self Covered Velcro Strap

One Size Fits Most



Black



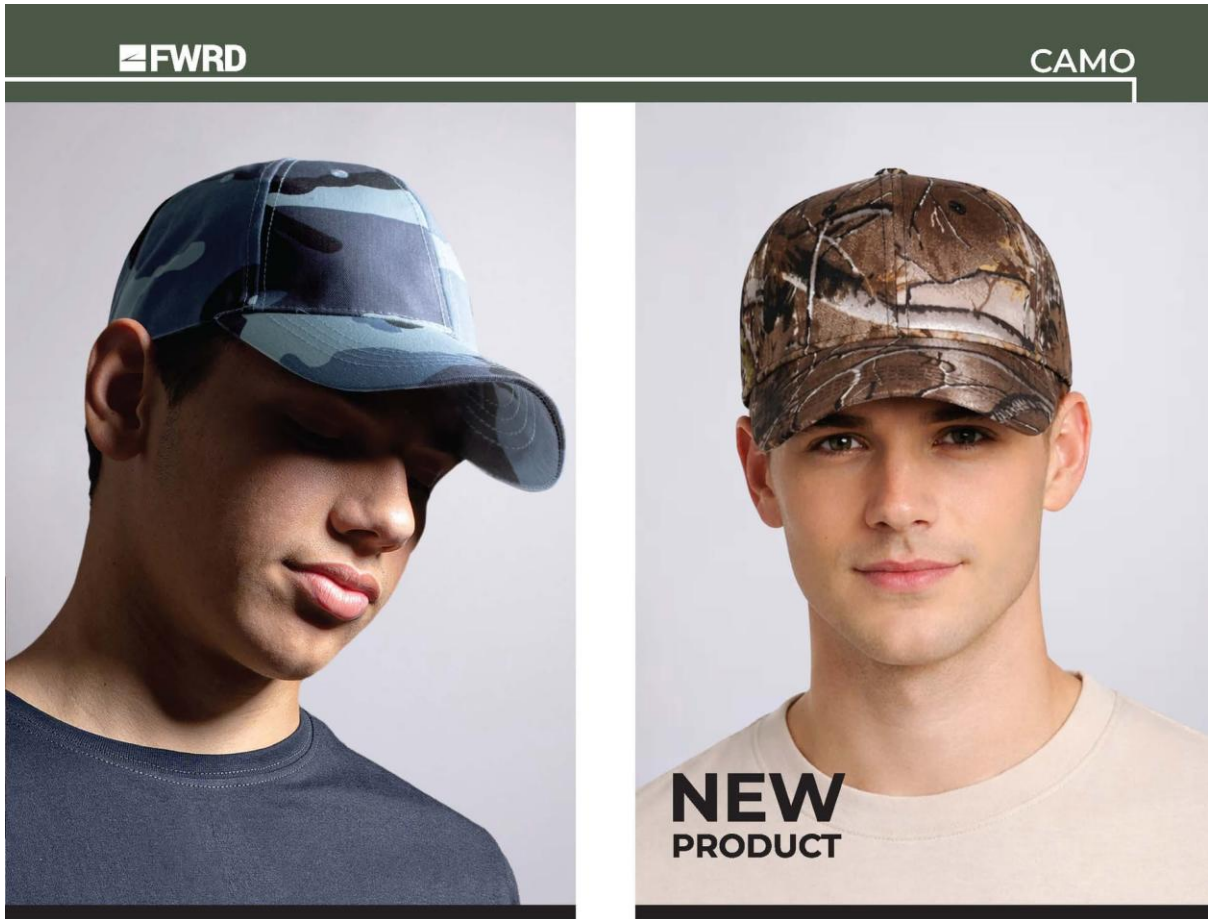
Bottle



Navy

**R85.00 – BASIC 6 PANEL CAMO // R90.00 – 6 P OAKSHADE  
CAMP CAP**

**Without embroidery**



**BASIC 6 PANEL CAMO**

- Cotton Twill
- 6 Panel
- Structured
- Embroidered Eyelets
- Polyester Sweatband
- Pre-Curved Peak
- Self Fabric Velcro Strap



SCAN ME

One Size Fits Most



**6 PANEL OAKSHADE  
CAMO**

- Cotton Twill
- 6 Panel
- Structured
- Embroidered Eyelets
- Polyester Sweatband
- Pre-Curved Peak
- Self Fabric Velcro Strap



SCAN ME

One Size Fits Most



**R70.00 – VINATGE TRUCKER CAMO // R70.00 TRUCKER CAMO**

**Without embroidery**



**VINTAGE TRUCKER CAMO**

- 100% Polyester with Hard Mesh Back
- Foam Front
- 5 Panel
- Structured
- Polyester Sweatband
- Pre-Curved Peak
- Double Row Plastic Tab Closure



SCAN ME

One Size Fits Most



Camo



**TRUCKER CAMO**

- Cotton Twill with Soft Mesh Back
- 6 Panel Cap
- Structured
- Pre-Curved Peak
- Polyester Sweatband
- Plastic Tab Closure



SCAN ME



One Size Fits Most

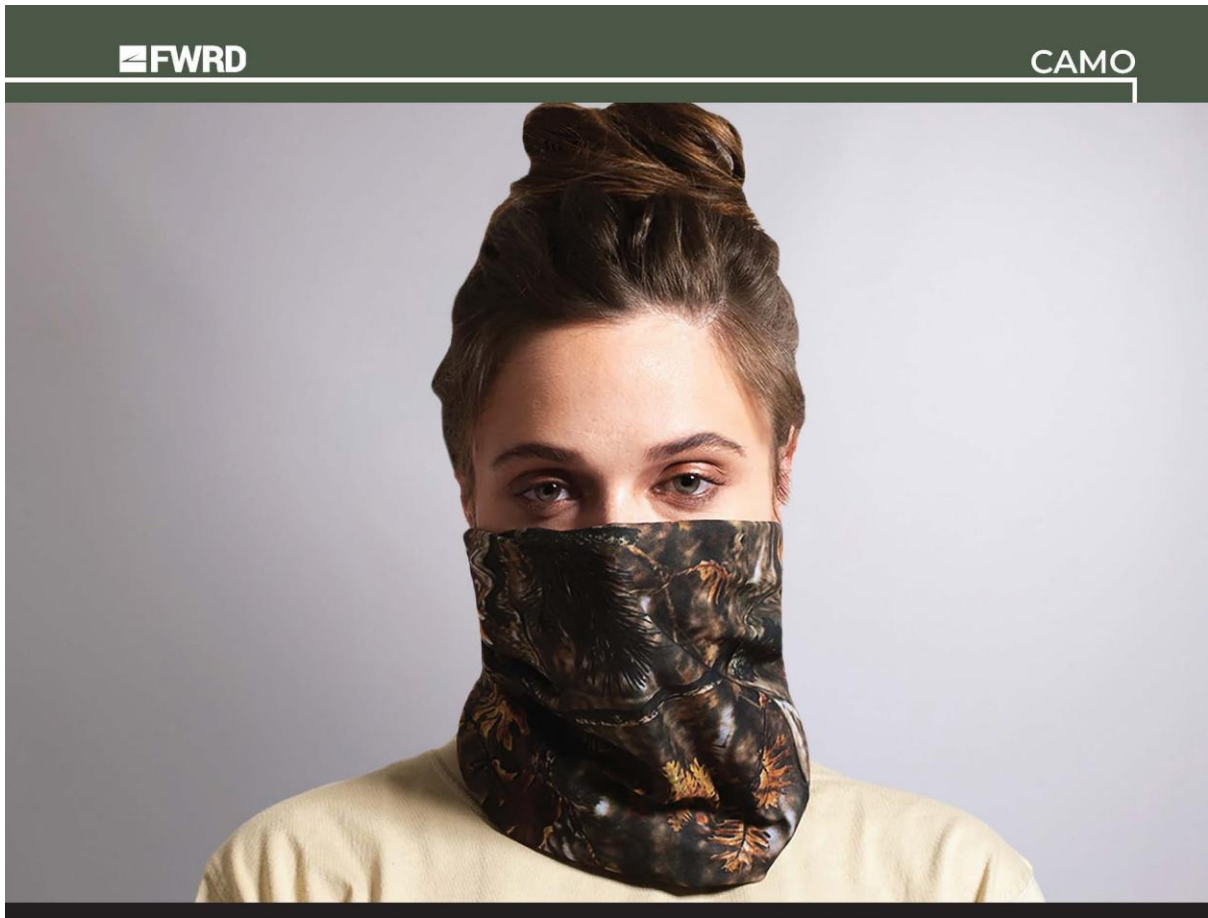


Forrest Camo/Black



**R35.00**

**Without embroidery**



**FWRD**

**CAMO**

## MULTIFUNCTIONAL HEADWEAR CAMO

- 38 gsm (95% Polyester | 5% Spandex)
- Multiple Uses
- Seamless

One Size Fits Most



STRETCH



SCAN ME



Autumn Camo

**R70.00**

**Without embroidery**



## ICE BEANIE

- 100% Acrylic Yarn
- Stretch Fit
- Turn-Up Band
- Faux Leather Tab detail

One Size Fits Most



SCAN ME



**R60.00 – ALPINE BEANIE // R80.00 – GLACIER RIBBED BEANIE**

**Without embroidery**



**ALPINE BEANIE**

- 66gsm 100% Acrylic Knitted
- Stretch Fit
- Pom Detail
- Turn-Up Band



One Size Fits Most  
\*While stocks last



**GLACIER RIBBED BEANIE**

- Acrylic, Core, Spun Yarn
- Extra Soft Yarn
- Stretch Fit
- Turn-Up Band

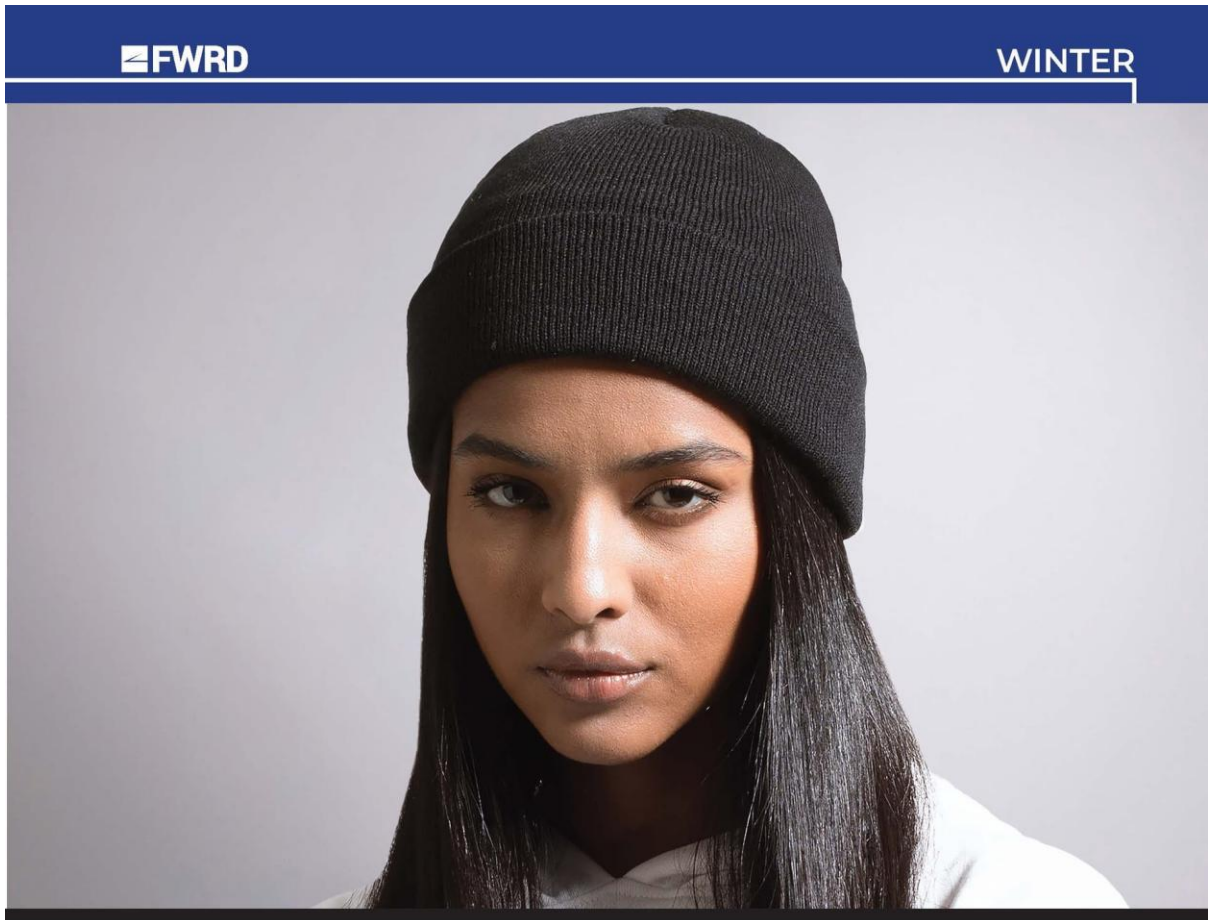


One Size Fits Most



**R50.00**

**Without embroidery**



## ASPEN BEANIE

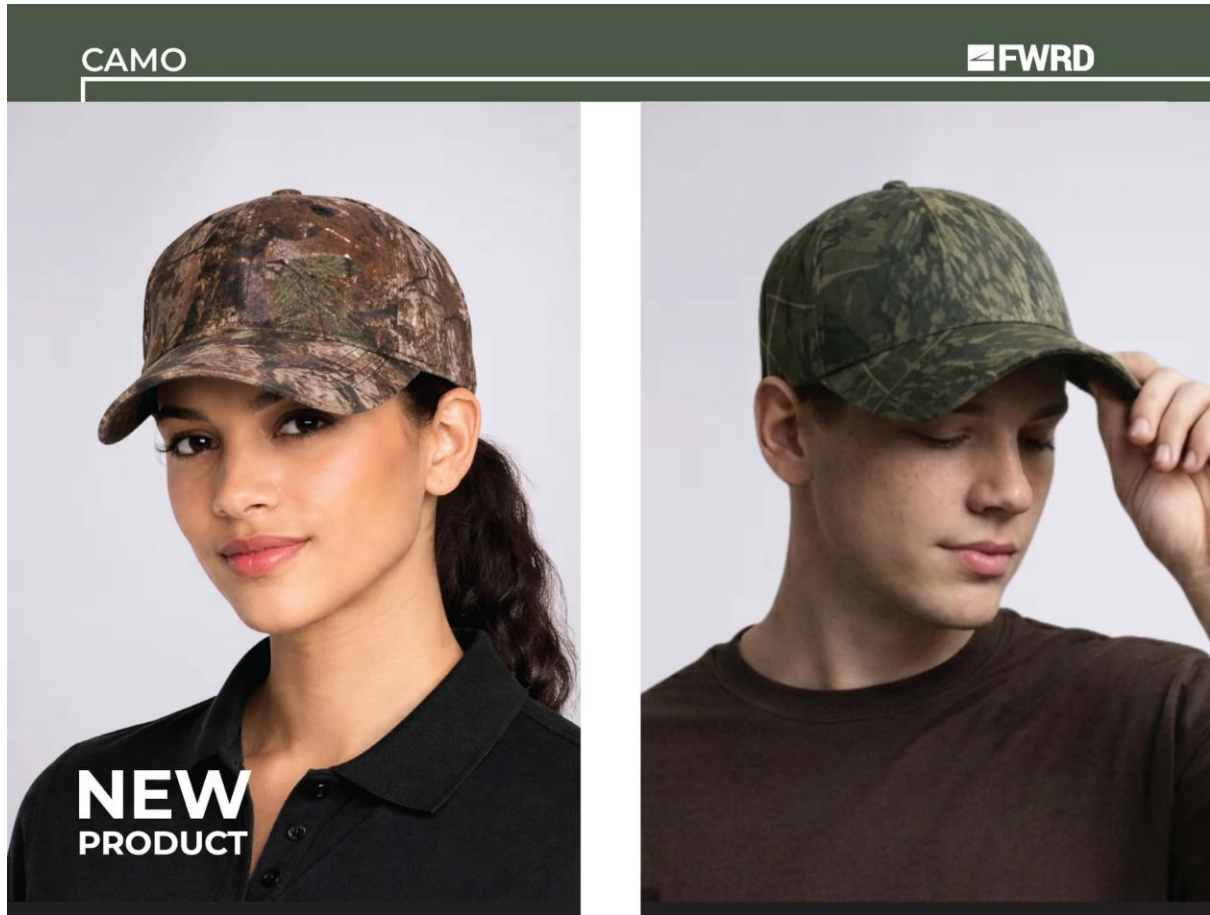
- 64gsm 100% Acrylic Knitted
- Stretch-Fit
- Turn-Up Band

One Size Fits Most



**R90.00 – 6 PANEL LEAFLOCK CAMO // R90.00 – 6 P FORREST CAMO CAP**

**Without embroidery**



**NEW  
PRODUCT**

**6 PANEL LEAFLOCK CAMO**



- Cotton Twill
- 6 Panel
- Structured
- Embroidered Eyelets
- Polyester Sweatband
- Pre-Curved Peak
- Self Fabric Velcro Strap



SCAN ME

One Size Fits Most



Leaflock Camo

**6 PANEL FORREST CAMO**



- Cotton Twill
- 6 Panel
- Structured
- Embroidered Eyelets
- Polyester Sweatband
- Pre-Curved Peak
- Self Fabric Velcro Strap



SCAN ME

One Size Fits Most



Forrest Camo

**R90.00**

**Without embroidery**



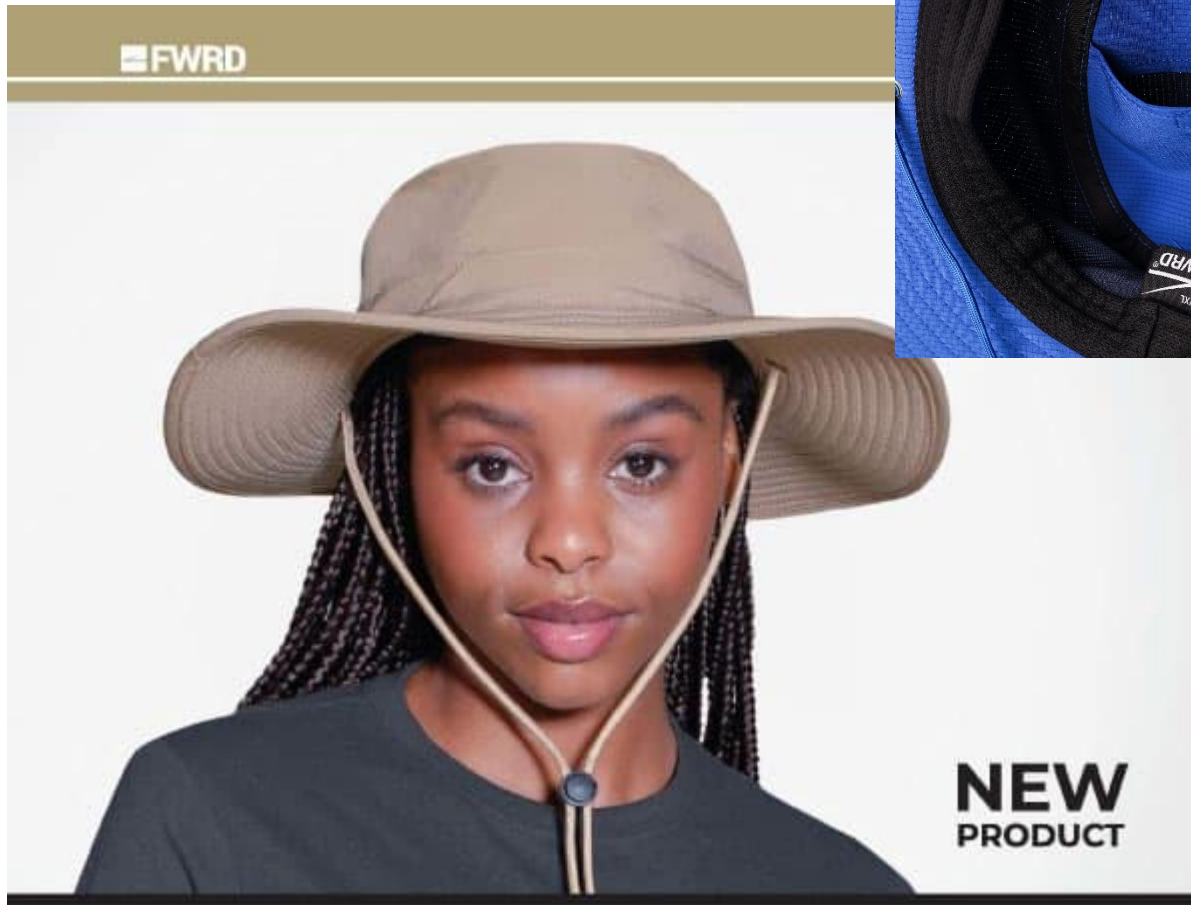
**NEW  
HERITAGE  
CAP**

- Enzyme Washed Cotton (100%)
- 6 Panel Unstructured
- Embroidered Eyelets
- Pre-Curved Peak
- Brass Clasp & Grommet Closure
- Low Profile

**STAND OUT STAND PROUD**

**R165.00**

**Without embroidery**



## KALAHARI HAT

- 100% Polyester - Ripstop Fabric
- Bird Eye Sweatband
- Cord With Slide Toggle
- Inner Crown Pocket
- Tonal Coated Silver Eyelets
- Fade Resistant

S/M 30cm L/XL 30cm



## KALAHARI HAT



- 100% Polyester - Ripstop Fabric
- Bird Eye Sweatband
- Cord With Slide Toggle
- Inner Crown Pocket
- Tonal Coated Silver Eyelets
- Fade Resistant

colours



**Built for Sun. Made for Adventure**

**R60.00 (beanie only)**

**Without embroidery**



**CHOOSE YOUR COLOUR**



**IVORY**  
Beanie  
Scarf



**SAGE GREEN**  
Beanie  
Scarf



**TAUPE**  
Beanie  
Scarf



**TOBACCO**  
Beanie  
Scarf



**TEAL BLUE**  
Beanie  
Scarf

**R125.00**

**Without embroidery**



### Colours

Black

Navy

Pink

White

### Product Features

- 100% Polyester
- 5 Panel Unstructured Cap
- Perforated side panels
- Looped Velcro Closure
- Birdseye sweatband

**Performance Meets Style.**